



## Summary

### **Feature Upgrades**

- **Feature Upgrade: Charging with My BMW App**
- **Feature Upgrade: Fast Charging**
- **Feature Upgrade: Fast Charging Temperature Management**
- **New Feature: QLOCKTWO**
- **Feature Upgrade: Launch Control**
- **Feature Upgrade: Head-Up Display**
- **Feature Upgrade: Terrain View in BMW Digital Premium**
- **Feature Upgrade: Curve-Ahead View now in BMW Digital Premium**
- **Feature Upgrade: Hill Descent Control now in BMW Digital Premium**
- **Feature Upgrade: BMW Intelligent Personal Assistant**
- **Feature Upgrade: Vitalize Mode**
- **Feature Upgrade: BMW Intelligent Personal Assistant**
- **Feature Upgrade: BMW Intelligent Personal Assistant Icons**
- **Feature Upgrade: Navigation Display**
- **Feature Upgrade: Speed Limit Assistant**
- **Feature Upgrade: Traffic Light and Sign Warning now in many additional states**
- **Feature Upgrade: Parking Assistant Professional now in the BMW ConnectedDrive Store**
- **Feature Upgrade: "Silent" My Mode**
- **Feature Upgrade: "Silent" My Mode now in BMW Digital Premium**
- **Feature Upgrade: Guest Profile**
- **Feature Upgrade: Quick Links**

### **Quality improvement:**

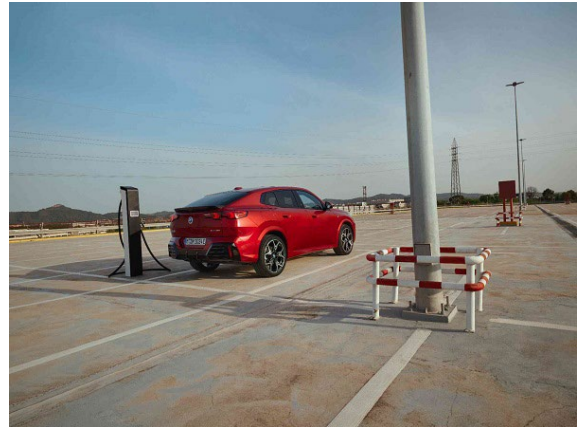
- **Quality Improvements: Multimedia Display**
- **Quality Improvement: Lane Keeping Assistant**

### **Notes on Remote Software Upgrade**



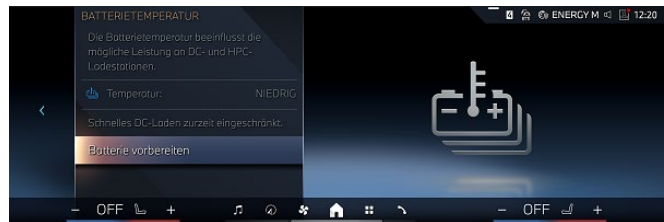
### Feature Upgrade: Charging with My BMW App

With this update, you can now use the My BMW App to preheat your BMW's battery to the ideal temperature for fast charging before starting your journey.



### Feature Upgrade: Fast Charging

At low temperatures, it takes a few miles for a battery to be warm enough for fast charging. This update lets you know exactly when it's ready. Right from the start, a widget in the central display shows the battery temperature.



### Feature Upgrade: Fast Charging Temperature Management

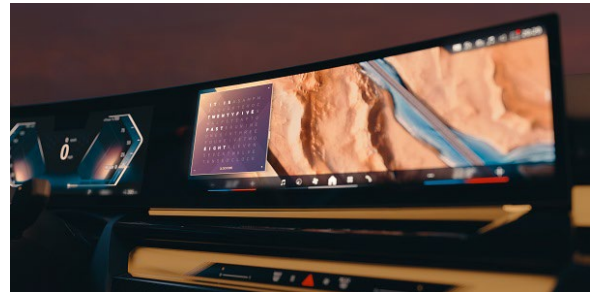
This update allows you to use automatic heat management for your battery. Once you set a charging station as your navigation destination, the battery is precisely heated to the optimal temperature. This results in faster charging processes that are gentler on the battery.





## New Feature: QLOCKTWO

**QLOCKTWO displays the time in letters. Created by renowned designers Biegert & Funk, the arrangement and display changes every five minutes.**



## Feature Upgrade: Launch Control

**With this update, the active Launch Control display is much larger and has greater visual appeal. One look makes it clear that everything is ready for optimum traction.**



## Feature Upgrade: Head-Up Display

**The BMW Head-Up Display has been enhanced. All overlays and information are still available as usual.**





## **Feature Upgrade: Terrain View in BMW Digital Premium**

**Digital Premium now includes Terrain View, offering real-time 3D monitoring of your BMW's stability on uneven terrain. View inclinations, height, and steering angle on the central display. In xDrive models, you can view the power distributed to all four wheels. Available as a separate add-on.**



## **Feature Upgrade: Curve-Ahead View now in BMW Digital Premium**

**Digital Premium now includes Curve-Ahead View, making unfamiliar routes and challenging conditions easier to navigate. Your BMW highlights upcoming bends and suggests the ideal speed using color-coded indicators. Available as a separate add-on.**



## **Feature Upgrade: Hill Descent Control now in BMW Digital Premium**

**Digital Premium now includes Hill Descent Control for added stability on steep downhill drives. It automatically maintains a constant speed, providing greater control even on slippery surfaces, with automatic braking when needed. Available as a separate add-on.**





## **Feature Upgrade: BMW Intelligent Personal Assistant**

**BMW Intelligent Personal Assistant Visualization is now front and center. Previously, shown across multiple displays, it's now streamlined to the central display, giving everyone in the vehicle a clear view.**



## **Feature Upgrade: Vitalize Mode**

**The "Vitalize Mode" is now available to you as a free upgrade, adding a refreshing boost to your drives. Designed for long trips, it uses stimulating sounds, vibrant colors, and refreshing air conditioning to keep you focused and energized.**

## **Feature Upgrade: BMW Intelligent Personal Assistant**

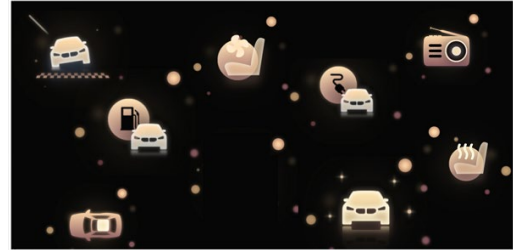
**With this update, the BMW Intelligent Personal Assistant highlights useful content while charging. This allows you to better familiarize yourself with different services and the charging information of your vehicle.**





### Feature Upgrade: BMW Intelligent Personal Assistant Icons

The update adds new icons to your BMW's personal assistant, offering clearer visual responses to voice commands for navigation, entertainment, and comfort. These icons are included in the BMW Digital Premium package, available as a separate add-on.



### Feature Upgrade: Navigation Display

This update organizes navigation settings into a convenient widget on the left, with additional icons on the right for a quick overview. Key functions are easily accessible with a tap, and dynamic filters in the search function make finding your destination fast and simple.



### Feature Upgrade: Speed Limit Assistant

This update enables Speed Limit Assistant to automatically adjust your speed to the applicable limit on highways with strictly controlled access via entrance and exit ramps. Enjoy a more relaxed drive, staying within speed limits effortlessly on long trips.



## **Feature Upgrade: Traffic Light and Sign Warning now in many additional states**

**With this update, Traffic Light and Sign Warning is active almost everywhere in the United States. This safety function warns you in situations where you are required to give way to other vehicles on the basis of traffic lights and road signs.**



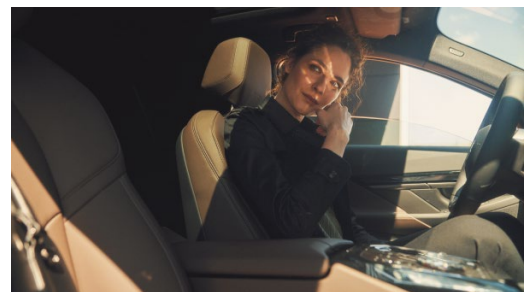
## **Feature Upgrade: Parking Assistant Professional now in the BMW ConnectedDrive Store**

**The intelligent parking assistant handles parking and exiting for you, using cameras and sensors to measure the surroundings. Save a parking maneuver once, and your BMW can repeat it automatically. Monitor the process from the driver's seat or via smartphone, perfect for frequent or tight parking situations.**



## **Feature Upgrade: "Silent" My Mode**

**My Mode Silent dims the dashboard lights and reduces noise with a single button press, making it ideal for quiet drives or conversations while on the road.**





## Feature Upgrade: "Silent" My Mode now in BMW Digital Premium

**My Mode Silent dims the dashboard lights and reduces noise with a single button press, making it ideal for quiet drives or conversations while on the road. My Mode Silent is added as a separately bookable BMW Digital Premium service.**



## Feature Upgrade: Guest Profile

**With this update, the guest profile will no longer have access to mobile Internet via the built-in SIM card, and address data for automatic parking maneuvers will be hidden.**



## Feature Upgrade: Quick Links

**QuickSelect widgets streamline the main menu for quick access. Customize your favorite functions, and open them with a single tap. Long press a widget to configure its display to your preferences.**







### Quality Improvements: Multimedia Display

Updates include enhanced graphics for displays, buttons and text on screen. Additionally, the integration of Apple CarPlay and Android Auto has been optimized, and the stability of displays, along with smoother scrolling behavior, has been increased. The software for electrically seat adjustments has been improved.

### Quality Improvement: Lane Keeping Assistant

The warning and feedback via the steering wheel behavior of the Lane Keeping Assistant function has been improved for you.

### Notes on Remote Software Upgrade

This Remote Software Upgrade updates existing functions to the latest technical standards. New features depend on your installed equipment, which you can review in your BMW Owner's Manual, at your service center, or through BMW ConnectedDrive Customer Relations.

The update automatically refreshes installed BMW ConnectedDrive apps and the Integrated Owner's Manual. Be aware that control messages may appear due to system restarts, such as powertrain malfunctions. If these messages persist on subsequent trips, contact your service center.

For BMW Plug-in Hybrids and electric vehicles, charging processes might be interrupted and not automatically resumed if you update while charging.

Note that unapproved conversions, retrofits, engine tuning, or special coding may be lost or cause issues due to the upgrade. BMW AG and service centers are not liable for any resulting damage. After installation, privacy settings may revert to factory defaults, so check and adjust them as needed. Remember, driver assistance systems do not replace your responsibility while driving.